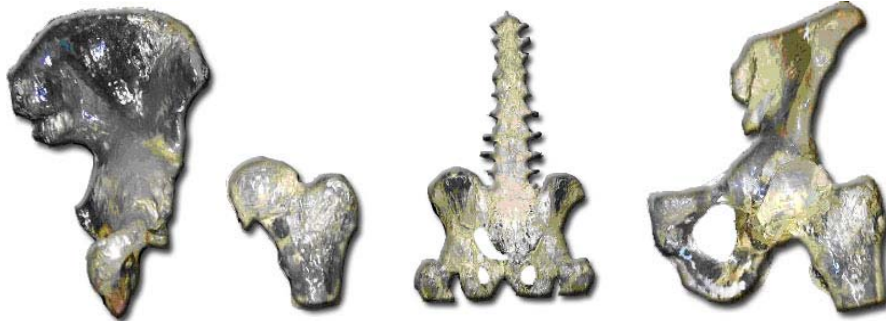


## ORTHOPEDIC CT SCANNING PROTOCOL

Please take the time to read this entire protocol.

### SCANNING ACQUISITION



- (2.0 – 3.0mm thickness is ideal.) Use as small a field of view (FOV) as possible while still including the patient's external contour. Please ensure that scans are free from motion artifact.
- Do not use a gantry tilt in scanning patients. Please take steps to minimize artifact from the presence of metal. Archive the entire study, uncompressed in DICOM format, to a removable medium. The most reliable method of image transfer is DICOM format on CD-R. We offer the ability to transfer image data via computer network.
- Call TMJ Implants Inc. at (800) 825-4865 for more information.

---

### RECOMMENDED PROTOCOL IMAGING GUIDE

Acquisition:	Helical
FOV:	Set FOV to include entire area of interest
Gantry Tilt:	0
Scan Spacing:	Contiguous slices
Reconstruction:	None
Scan Thickness:	2.0 – 3.0mm
	Please call for recommendations if needed.
Algorithm:	Standard (not bone or detail)
Pitch:	1:1

---

### RECOMMENDED SCANNING GUIDELINES

1. Remove any jewelry and removable prostheses within the scan area.
2. Stabilize the patient. **If patient motion occurs the scan must be restarted.**
3. Follow the treating surgeon request. If there are any questions, please contact the treating surgeon.
4. Please archive the original data for a minimum of 72 hours to allow TMJ Implants, Inc. to transfer and verify the data. TMJI SLA technician will call if there is a problem importing the scan.

**Note:** We can import image data from most CT scanners and PACS system disks. Please have the CT Technologist call our representatives toll-free at 1-800-825-4865 for first time use of this protocol, or if you are using a Low Radiation Scanner.

---

**SHIPPING INFORMATION**  
17301 West Colfax Avenue Suite 135  
Golden, Colorado 80401-4800 USA  
Tel: 303.277.1338 Fax: 303.277.1421  
Visit us at: [www.tmj.com](http://www.tmj.com)