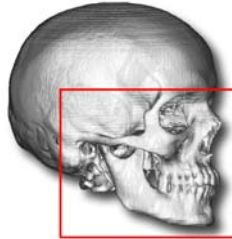


## CRANIO SCAN CT PROTOCOL

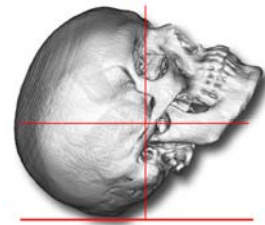
Please take the time to read this entire protocol.

### SCANNING ACQUISITION (Axial or Helical)

#### Area of Interest



#### Patient Positioning



- (0.65 – 1.25mm thickness is ideal.) Use as small a field of view (FOV) as possible while still including the patient's external contour. Please ensure that scans are free from motion artifact.
- Do not use a gantry tilt in scanning patients. Please take steps to minimize artifact from the presence of metal. Archive the entire study, uncompressed in DICOM format, to a removable medium. The most reliable method of image transfer is DICOM format on CD-R. We offer the ability to transfer image data via computer network.
- Call TMJ Implants Inc. at (800) 825-4865 for more information.

### RECOMMENDED PROTOCOL IMAGING GUIDE

FOV:	25.0cm
Gantry Tilt:	0
Scan Spacing:	0.65-1.25mm
Scan Thickness:	0.65-1.25mm
Algorithm:	Standard (No Detail)
MA/KVP	120-180 MA / 120 KVP
Pitch:	1:1

#### Note:

If using a single slice scanner do not reconstruct images to slices that are thinner than the original acquisition. If using a single slice scanner scan the patient with the thinnest slice thickness possible (0.65 – 1.25mm is ideal).

### RECOMMENDED SCANNING GUIDELINES

1. Remove any jewelry and removable prostheses within the scan area.
2. Stabilize the patient. **If patient motion occurs the scan must be restarted.**
3. The patient should be scanned in their natural occlusion when possible.
4. Should the treating surgeon desire a different post-operative occlusion, the teeth must be separated with tongue blades to create 4-5 mm separation of occlusion or other suitable mechanism to stabilize the teeth during scanning.
5. If there are any questions, please contact the treating surgeon.
6. **Scan from the bottom of the mandible to 5cm above the temporomandibular joints.**
7. Please archive the original data for a minimum of 72 hours to allow TMJ Implants, Inc. to transfer and verify the data. TMJI SLA technician will call if there is a problem importing the scan.

**Note:** We can import image data from most CT scanners and PACS system disks. Please have the CT Technologist call our representatives toll-free at 1-800-825-4865 for first time use of this protocol, or if you are using a Low Radiation Scanner.

#### SHIPPING INFORMATION

17301 West Colfax Avenue Suite 135  
Golden, Colorado 80401-4800 USA  
Tel: 303.277.1338 Fax: 303.277.1421  
Visit us at: [www.tmj.com](http://www.tmj.com)